

TSW030

8-PORT ETHERNET SWITCH



TSW030 360° VIEW

The TSW030 is a cost-efficient unmanaged Ethernet switch, featuring eight 10/100 RJ45 ports and integrated DIN rail mounting. This compact and rugged 8-port switch includes a 2-pin power input and low power consumption of up to 0.5 W when idle and a maximum of up to 1.5 W. These make this plug-and-play switch perfect for industrial applications requiring to connect up to eight devices.



2-PIN POWER INPUT

Simple and suitable for industrial applications

LOW POWER CONSUMPTION

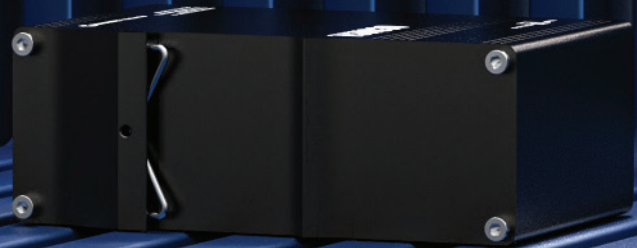
Up to 0.5 W when idle, up to 1.5 W maximum

INTEGRATED DIN RAIL BRACKET

Easy mounting for plug-and-play deployment

8 X RJ45 PORTS

Eight 10/100 Mbps Ethernet ports



KEY FEATURES

HARDWARE

Powering options	2-pin industrial DC power socket, 7 – 57 VDC
Power consumption	Idle: 0.5 W / Max: 1.5 W
Ethernet	8 x ETH ports, 10/100 Mbps, supports auto MDI/MDIX crossover
IEEE 802.3 series standards	802.3i, 802.3u, 802.3ab, 802.3x, 802.3az
Status LEDs	1 x Power LED, 16 x ETH status LEDs
Ingress Protection Rating	IP30
Operating temperature	-40 °C to 75 °C
Housing	Anodized aluminum housing and panels
Dimensions (W x H x D)	113.1 x 41.2 x 74.6 mm
Weight	256 g
Grounding	1 x Grounding screw
Mounting options	Integrated DIN rail bracket, wall mount, flat surface (additional kit needed)

PERFORMANCE SPECIFICATIONS

Bandwidth (Non-blocking)	20 Gbps
Packet buffer	128 KB
MAC address table size	2K entries
Jumbo frame support	9216 bytes

FRONT VIEW

BACK VIEW

